

## Anti-Factor I Antibody

| Catalog #                | Source  | Reactivity | Applications |
|--------------------------|---|------------|--------------|
| CPA1573                  | Rabbit  | H, M, R    | WB, IH       |
| <b>Description</b>       | Rabbit polyclonal antibody to Factor I  |            |              |
| <b>Immunogen</b>         | KLH-conjugated synthetic peptide encompassing a sequence within the center region of human Factor I. The exact sequence is proprietary. |            |              |
| <b>Purification</b>      | The antibody was purified by immunogen affinity chromatography.   |            |              |
| <b>Specificity</b>       | Recognizes endogenous levels of Factor I protein.   |            |              |
| <b>Clonality</b>         | Polyclonal  |            |              |
| <b>Conjugation</b>       |   |            |              |
| <b>Form</b>              | Liquid in 0.42% Potassium phosphate, 0.87% Sodium chloride, pH 7.3, 30% glycerol, and 0.01% sodium azide.                               |            |              |
| <b>Dilution</b>          | WB (1/500 - 1/1000), IH (1/50 - 1/100)  |            |              |
| <b>Gene Symbol</b>       | CFI   |            |              |
| <b>Alternative Names</b> | IF; Complement factor I; C3B/C4B inactivator  |            |              |
| <b>Entrez Gene</b>       | 3426 (Human); 12630 (Mouse); 79126 (Rat)  |            |              |
| <b>SwissProt</b>         | P05156 (Human); Q61129 (Mouse); Q9WUW3 (Rat)  |            |              |
| <b>Storage/Stability</b> | Shipped at 4°C. Upon delivery aliquot and store at -20°C for one year. Avoid freeze/thaw cycles.  |            |              |

**Application key:** E- ELISA, WB- Western blot, IH- Immunohistochemistry, IF- Immunofluorescence, FC- Flow cytometry, IC- Immunocytochemistry, IP- Immunoprecipitation, CHIP- Chromatin Immunoprecipitation, EMSA- Electrophoretic Mobility Shift Assay, BL- Blocking, SE- Sandwich ELISA, CBE- Cell-based ELISA, RNAi- RNA interference

**Species reactivity key:** H- Human, M- Mouse, R- Rat, B- Bovine, C- Chicken, D- Dog, G- Goat, Mk- Monkey, P- Pig, Rb- Rabbit, S- Sheep, Z- Zebrafish

### COHESION BIOSCIENCES LIMITED

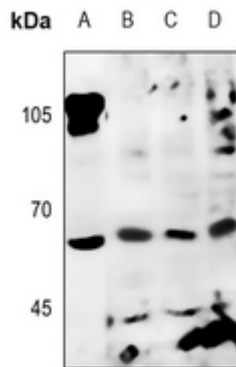
**WEB**  
[www.cohesionbio.com](http://www.cohesionbio.com)

**ORDER**  
[order@cohesionbio.com](mailto:order@cohesionbio.com)

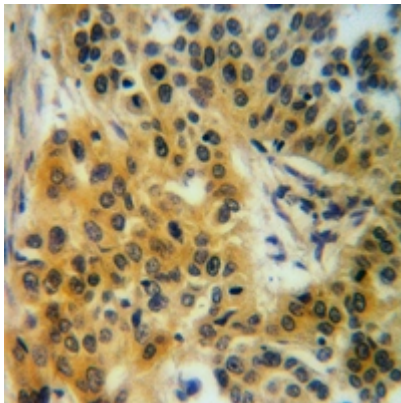
**SUPPORT**  
[techsupport@cohesionbio.com](mailto:techsupport@cohesionbio.com)

**CUSTOM**  
[custom@cohesionbio.com](mailto:custom@cohesionbio.com)

## Product Data Sheet



Western blot analysis of Factor I expression in A549 (A), mouse kidney (B), rat liver (C), rat kidney (D) whole cell lysates. (Predicted band size: 65 kD; Observed band size: 66 kD)



Immunohistochemical analysis of Factor I staining in human kidney cancer formalin fixed paraffin embedded tissue section. The section was pre-treated using heat mediated antigen retrieval with sodium citrate buffer (pH 6.0). The section was then incubated with the antibody at room temperature and detected using an HRP conjugated compact polymer system. DAB was used as the chromogen. The section was then counterstained with haematoxylin and mounted with DPX.

**Application key:** E- ELISA, WB- Western blot, IH- Immunohistochemistry, IF- Immunofluorescence, FC- Flow cytometry, IC- Immunocytochemistry, IP- Immunoprecipitation, ChIP- Chromatin Immunoprecipitation, EMSA- Electrophoretic Mobility Shift Assay, BL- Blocking, SE- Sandwich ELISA, CBE- Cell-based ELISA, RNAi- RNA interference

**Species reactivity key:** H- Human, M- Mouse, R- Rat, B- Bovine, C- Chicken, D- Dog, G- Goat, Mk- Monkey, P- Pig, Rb- Rabbit, S- Sheep, Z- Zebrafish

### COHESION BIOSCIENCES LIMITED

**WEB**

[www.cohesionbio.com](http://www.cohesionbio.com)

**ORDER**

[order@cohesionbio.com](mailto:order@cohesionbio.com)

**SUPPORT**

[techsupport@cohesionbio.com](mailto:techsupport@cohesionbio.com)

**CUSTOM**

[custom@cohesionbio.com](mailto:custom@cohesionbio.com)