

## Anti-ETS1 (Phospho-T38) Antibody

Catalog #	Source	Reactivity	Applications
CPA1400	Rabbit	H, M, R, B, C, D, P, Rb	WB, IH, IF/IC
<b>Description</b>	Rabbit polyclonal antibody to ETS1 (Phospho-T38)		
<b>Immunogen</b>	KLH-conjugated synthetic phosphopeptide corresponding to residues surrounding T38 of human ETS1 protein. The exact sequence is proprietary.		
<b>Purification</b>	The antibody was purified by immunogen affinity chromatography.		
<b>Specificity</b>	Recognizes endogenous levels of ETS1 protein only when phosphorylated at T38.		
<b>Clonality</b>	Polyclonal		
<b>Conjugation</b>			
<b>Form</b>	Liquid in 0.42% Potassium phosphate, 0.87% Sodium chloride, pH 7.3, 30% glycerol, and 0.01% sodium azide.		
<b>Dilution</b>	WB (1/500 - 1/1000), IH (1/100 - 1/200), IF/IC (1/100 - 1/500)		
<b>Gene Symbol</b>	ETS1		
<b>Alternative Names</b>	EWSR2; Protein C-ets-1; p54		
<b>Entrez Gene</b>	2113 (Human); 23871 (Mouse); 24356 (Rat)		
<b>SwissProt</b>	P14921 (Human); P27577 (Mouse); P41156 (Rat)		
<b>Storage/Stability</b>	Shipped at 4°C. Upon delivery aliquot and store at -20°C for one year. Avoid freeze/thaw cycles.		

**Application key:** E- ELISA, WB- Western blot, IH- Immunohistochemistry, IF- Immunofluorescence, FC- Flow cytometry, IC- Immunocytochemistry, IP- Immunoprecipitation, CHIP- Chromatin Immunoprecipitation, EMSA- Electrophoretic Mobility Shift Assay, BL- Blocking, SE- Sandwich ELISA, CBE- Cell-based ELISA, RNAi- RNA interference

**Species reactivity key:** H- Human, M- Mouse, R- Rat, B- Bovine, C- Chicken, D- Dog, G- Goat, Mk- Monkey, P- Pig, Rb- Rabbit, S- Sheep, Z- Zebrafish

### COHESION BIOSCIENCES LIMITED

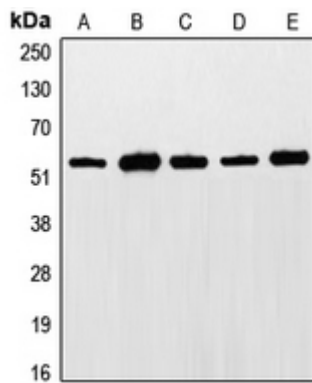
**WEB**  
[www.cohesionbio.com](http://www.cohesionbio.com)

**ORDER**  
[order@cohesionbio.com](mailto:order@cohesionbio.com)

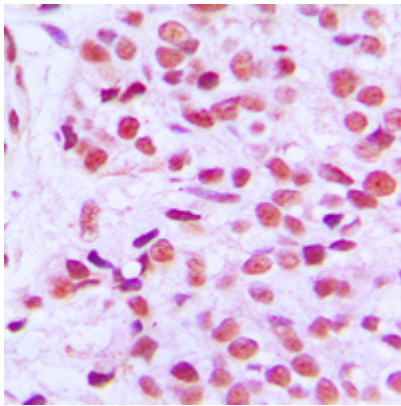
**SUPPORT**  
[techsupport@cohesionbio.com](mailto:techsupport@cohesionbio.com)

**CUSTOM**  
[custom@cohesionbio.com](mailto:custom@cohesionbio.com)

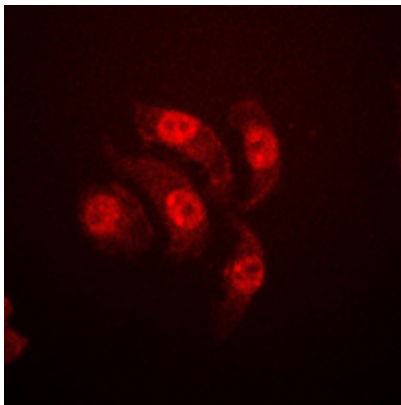
## Product Data Sheet



Western blot analysis of ETS1 (Phospho-T38) expression in LO2 (A), Jurkat (B), HepG2 (C), NIH3T3 (D), rat liver (E) whole cell lysates. (Predicted band size: 50 kD; Observed band size: 54 kD)



Immunohistochemical analysis of ETS1 (Phospho-T38) staining in human breast cancer formalin fixed paraffin embedded tissue section. The section was pre-treated using heat mediated antigen retrieval with sodium citrate buffer (pH 6.0). The section was then incubated with the antibody at room temperature and detected using an HRP conjugated compact polymer system. DAB was used as the chromogen. The section was then counterstained with haematoxylin and mounted with DPX.



Immunofluorescent analysis of ETS1 (Phospho-T38) staining in Jurkat cells. Formalin-fixed cells were permeabilized with 0.1% Triton X-100 in TBS for 5-10 minutes and blocked with 3% BSA-PBS for 30 minutes at room temperature. Cells were probed with the primary antibody in 3% BSA-PBS and incubated overnight at 4 °C in a humidified chamber. Cells were washed with PBST and incubated with a DyLight 594-conjugated secondary antibody (red) in PBS at room temperature in the dark.

**Application key:** E- ELISA, WB- Western blot, IH- Immunohistochemistry, IF- Immunofluorescence, FC- Flow cytometry, IC- Immunocytochemistry, IP- Immunoprecipitation, CHIP- Chromatin Immunoprecipitation, EMSA- Electrophoretic Mobility Shift Assay, BL- Blocking, SE- Sandwich ELISA, CBE- Cell-based ELISA, RNAi- RNA interference

**Species reactivity key:** H- Human, M- Mouse, R- Rat, B- Bovine, C- Chicken, D- Dog, G- Goat, Mk- Monkey, P- Pig, Rb- Rabbit, S- Sheep, Z- Zebrafish

### COHESION BIOSCIENCES LIMITED

**WEB**

[www.cohesionbio.com](http://www.cohesionbio.com)

**ORDER**

[order@cohesionbio.com](mailto:order@cohesionbio.com)

**SUPPORT**

[techsupport@cohesionbio.com](mailto:techsupport@cohesionbio.com)

**CUSTOM**

[custom@cohesionbio.com](mailto:custom@cohesionbio.com)