

Recombinant Anti-Peroxiredoxin 5 Rabbit mAb

Catalog #	Source	Reactivity	Applications
CMA4330	Rabbit	H, M, R	WB
Description	Recombinant rabbit monoclonal antibody to Peroxiredoxin 5		
Immunogen	KLH-conjugated synthetic peptide encompassing a sequence within human Peroxiredoxin 5. The exact sequence is proprietary.		
Purification	The antibody was purified by immunogen affinity chromatography.		
Specificity	Recognizes endogenous levels of Peroxiredoxin 5 protein		
Clonality	Monoclonal		
Conjugation			
Form	Liquid in PBS containing 50% glycerol, 0.2% BSA and 0.01% sodium azide.		
Dilution	WB (1/500 - 1/1000)		
Gene Symbol	PRDX5		
Alternative Names	ACR1; Peroxiredoxin-5, mitochondrial; Alu corepressor 1; Antioxidant enzyme B166; AOEB166; Liver tissue 2D-page spot 71B; PLP; Peroxiredoxin V; Prx-V; Peroxisomal antioxidant enzyme; TPx type VI; Thioredoxin peroxidase PMP20; Thioredoxin reductase		
Entrez Gene	25824 (Human); 54683 (Mouse); 113898 (Rat)		
SwissProt	P30044 (Human); P99029 (Mouse); Q9R063 (Rat)		
Storage/Stability	Shipped at 4°C. Upon delivery aliquot and store at -20°C for one year. Avoid freeze/thaw cycles.		

Application key: E- ELISA, WB- Western blot, IH- Immunohistochemistry, IF- Immunofluorescence, FC- Flow cytometry, IC- Immunocytochemistry, IP- Immunoprecipitation, ChIP- Chromatin Immunoprecipitation, EMSA- Electrophoretic Mobility Shift Assay, BL- Blocking, SE- Sandwich ELISA, CBE- Cell-based ELISA, RNAi- RNA interference

Species reactivity key: H- Human, M- Mouse, R- Rat, B- Bovine, C- Chicken, D- Dog, G- Goat, Mk- Monkey, P- Pig, Rb- Rabbit, S- Sheep, Z- Zebrafish

COHESION BIOSCIENCES LIMITED

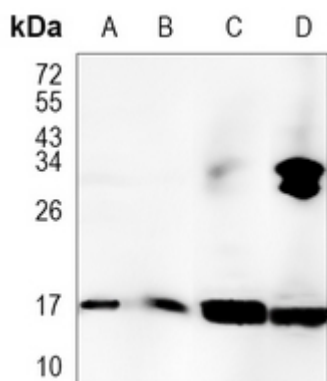
WEB
www.cohesionbio.com

ORDER
order@cohesionbio.com

SUPPORT
techsupport@cohesionbio.com

CUSTOM
custom@cohesionbio.com

Product Data Sheet



Western blot analysis of Peroxiredoxin 5 expression in Hela (A), PC3 (B), mouse muscle (C), rat muscle (D) whole cell lysates. (Predicted band size: 22 kD; Observed band size: 17 kD)

Application key: E- ELISA, WB- Western blot, IH- Immunohistochemistry, IF- Immunofluorescence, FC- Flow cytometry, IC- Immunocytochemistry, IP- Immunoprecipitation, CHIP- Chromatin Immunoprecipitation, EMSA- Electrophoretic Mobility Shift Assay, BL- Blocking, SE- Sandwich ELISA, CBE- Cell-based ELISA, RNAi- RNA interference

Species reactivity key: H- Human, M- Mouse, R- Rat, B- Bovine, C- Chicken, D- Dog, G- Goat, Mk- Monkey, P- Pig, Rb- Rabbit, S- Sheep, Z- Zebrafish

COHESION BIOSCIENCES LIMITED

WEB

www.cohesionbio.com

ORDER

order@cohesionbio.com

SUPPORT

techsupport@cohesionbio.com

CUSTOM

custom@cohesionbio.com