

Recombinant Anti-BAG2 Rabbit mAb

Catalog #	Source	Reactivity	Applications
CMA4313	Rabbit	H, M	WB
Description	Recombinant rabbit monoclonal antibody to BAG2		
Immunogen	KLH-conjugated synthetic peptide encompassing a sequence within human BAG2. The exact sequence is proprietary.		
Purification	The antibody was purified by immunogen affinity chromatography.		
Specificity	Recognizes endogenous levels of BAG2 protein		
Clonality	Monoclonal		
Conjugation			
Form	Liquid in PBS containing 50% glycerol, 0.2% BSA and 0.01% sodium azide.		
Dilution	WB (1/500 - 1/1000)		
Gene Symbol	BAG2		
Alternative Names	BAG family molecular chaperone regulator 2; BAG-2; Bcl-2-associated athanogene 2		
Entrez Gene	9532 (Human); 213539 (Mouse)		
SwissProt	O95816 (Human); Q91YN9 (Mouse)		
Storage/Stability	Shipped at 4°C. Upon delivery aliquot and store at -20°C for one year. Avoid freeze/thaw cycles.		

Application key: E- ELISA, WB- Western blot, IH- Immunohistochemistry, IF- Immunofluorescence, FC- Flow cytometry, IC- Immunocytochemistry, IP- Immunoprecipitation, ChIP- Chromatin Immunoprecipitation, EMSA- Electrophoretic Mobility Shift Assay, BL- Blocking, SE- Sandwich ELISA, CBE- Cell-based ELISA, RNAi- RNA interference

Species reactivity key: H- Human, M- Mouse, R- Rat, B- Bovine, C- Chicken, D- Dog, G- Goat, Mk- Monkey, P- Pig, Rb- Rabbit, S- Sheep, Z- Zebrafish

COHESION BIOSCIENCES LIMITED

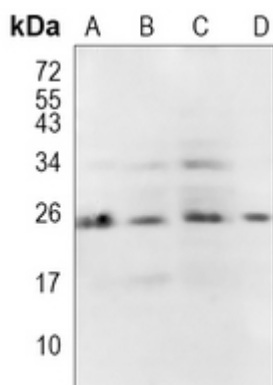
WEB
www.cohesionbio.com

ORDER
order@cohesionbio.com

SUPPORT
techsupport@cohesionbio.com

CUSTOM
custom@cohesionbio.com

Product Data Sheet



Western blot analysis of BAG2 expression in Hela (A), HepG2 (B), K562 (C), mouse kidney (D) whole cell lysates. (Predicted band size: 23 kD; Observed band size: 24 kD)

Application key: E- ELISA, WB- Western blot, IH- Immunohistochemistry, IF- Immunofluorescence, FC- Flow cytometry, IC- Immunocytochemistry, IP- Immunoprecipitation, ChIP- Chromatin Immunoprecipitation, EMSA- Electrophoretic Mobility Shift Assay, BL- Blocking, SE- Sandwich ELISA, CBE- Cell-based ELISA, RNAi- RNA interference

Species reactivity key: H- Human, M- Mouse, R- Rat, B- Bovine, C- Chicken, D- Dog, G- Goat, Mk- Monkey, P- Pig, Rb- Rabbit, S- Sheep, Z- Zebrafish

COHESION BIOSCIENCES LIMITED

WEB

www.cohesionbio.com

ORDER

order@cohesionbio.com

SUPPORT

techsupport@cohesionbio.com

CUSTOM

custom@cohesionbio.com