

Recombinant Anti-RhoA/B/C Rabbit mAb

Catalog #	Source	Reactivity	Applications
CMA4284	Rabbit	H, M, R	WB, IH
Description	Recombinant rabbit monoclonal antibody to RhoA/B/C		
Immunogen	KLH-conjugated synthetic peptide encompassing a sequence within human RhoA/B/C. The exact sequence is proprietary.		
Purification	The antibody was purified by immunogen affinity chromatography.		
Specificity	Recognizes endogenous levels of RhoA/B/C protein		
Clonality	Monoclonal		
Conjugation			
Form	Liquid in PBS containing 50% glycerol, 0.2% BSA and 0.01% sodium azide.		
Dilution	WB (1/500 - 1/1000), IH (1/50 - 1/200)		
Gene Symbol	RHOA; RHOB; RHOC		
Alternative Names	ARH12; ARHA; RHO12; Transforming protein RhoA; Rho cDNA clone 12; h12; ARH6; ARHB; Rho-related GTP-binding protein RhoB; Rho cDNA clone 6; h6; ARH9; ARHC; Rho-related GTP-binding protein RhoC; Rho cDNA clone 9; h9		
Entrez Gene	387, 388, 389 (Human); 11848, 11852, 11853 (Mouse); 117273 (Rat)		
SwissProt	P61586, P62745, P08134 (Human); Q9QUI0, P62746, Q62159 (Mouse); P61589 (Rat)		
Storage/Stability	Shipped at 4°C. Upon delivery aliquot and store at -20°C for one year. Avoid freeze/thaw cycles.		

Application key: E- ELISA, WB- Western blot, IH- Immunohistochemistry, IF- Immunofluorescence, FC- Flow cytometry, IC- Immunocytochemistry, IP- Immunoprecipitation, ChIP- Chromatin Immunoprecipitation, EMSA- Electrophoretic Mobility Shift Assay, BL- Blocking, SE- Sandwich ELISA, CBE- Cell-based ELISA, RNAi- RNA interference

Species reactivity key: H- Human, M- Mouse, R- Rat, B- Bovine, C- Chicken, D- Dog, G- Goat, Mk- Monkey, P- Pig, Rb- Rabbit, S- Sheep, Z- Zebrafish

COHESION BIOSCIENCES LIMITED

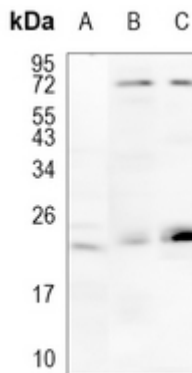
WEB
www.cohesionbio.com

ORDER
order@cohesionbio.com

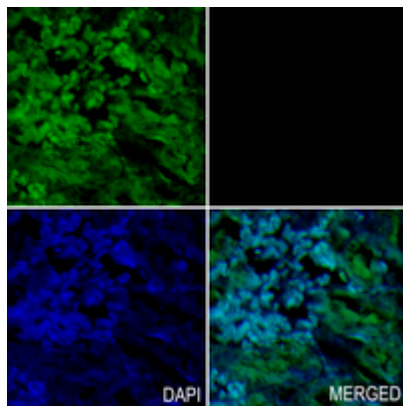
SUPPORT
techsupport@cohesionbio.com

CUSTOM
custom@cohesionbio.com

Product Data Sheet



Western blot analysis of RhoA/B/C expression in HEK293T (A), mouse kidney (B), rat kidney (C) whole cell lysates. (Predicted band size: 21 kD; Observed band size: 22 kD)



Immunohistochemical analysis of RhoA/B/C staining in rat kidney formalin fixed paraffin embedded tissue section. The section was pre-treated using heat mediated antigen retrieval with sodium citrate buffer (pH 6.0). The section was then incubated with the antibody at room temperature and detected using an HRP conjugated compact polymer system. Tyramide-AF488 (green) was used as the chromogen. The section was then counterstained with DAPI (blue).

Application key: E- ELISA, WB- Western blot, IH- Immunohistochemistry, IF- Immunofluorescence, FC- Flow cytometry, IC- Immunocytochemistry, IP- Immunoprecipitation, ChIP- Chromatin Immunoprecipitation, EMSA- Electrophoretic Mobility Shift Assay, BL- Blocking, SE- Sandwich ELISA, CBE- Cell-based ELISA, RNAi- RNA interference

Species reactivity key: H- Human, M- Mouse, R- Rat, B- Bovine, C- Chicken, D- Dog, G- Goat, Mk- Monkey, P- Pig, Rb- Rabbit, S- Sheep, Z- Zebrafish

COHESION BIOSCIENCES LIMITED

WEB
www.cohesionbio.com

ORDER
order@cohesionbio.com

SUPPORT
techsupport@cohesionbio.com

CUSTOM
custom@cohesionbio.com