

## Recombinant Anti-RBMLX2 Rabbit mAb

| Catalog #                | Source  | Reactivity | Applications |
|--------------------------|---|------------|--------------|
| CMA4211                  | Rabbit  | H          | WB, IF/IC    |
| <b>Description</b>       | Recombinant rabbit monoclonal antibody to RBMLX2  |            |              |
| <b>Immunogen</b>         | KLH-conjugated synthetic peptide encompassing a sequence within human RBMLX2. The exact sequence is proprietary.            |            |              |
| <b>Purification</b>      | The antibody was purified by immunogen affinity chromatography.   |            |              |
| <b>Specificity</b>       | Recognizes endogenous levels of RBMLX2 protein  |            |              |
| <b>Clonality</b>         | Monoclonal  |            |              |
| <b>Conjugation</b>       |   |            |              |
| <b>Form</b>              | Liquid in PBS containing 50% glycerol, 0.2% BSA and 0.01% sodium azide.   |            |              |
| <b>Dilution</b>          | WB (1/500 - 1/1000), IF/IC (1/50 - 1/200)   |            |              |
| <b>Gene Symbol</b>       | RBMLX2  |            |              |
| <b>Alternative Names</b> | HNRNPGT; RNA-binding motif protein, X-linked-like-2; Testis-specific heterogeneous nuclear ribonucleoprotein G-T; hnRNP G-T |            |              |
| <b>Entrez Gene</b>       | 27288 (Human)   |            |              |
| <b>SwissProt</b>         | O75526 (Human)  |            |              |
| <b>Storage/Stability</b> | Shipped at 4°C. Upon delivery aliquot and store at -20°C for one year. Avoid freeze/thaw cycles.                            |            |              |

**Application key:** E- ELISA, WB- Western blot, IH- Immunohistochemistry, IF- Immunofluorescence, FC- Flow cytometry, IC- Immunocytochemistry, IP- Immunoprecipitation, ChIP- Chromatin Immunoprecipitation, EMSA- Electrophoretic Mobility Shift Assay, BL- Blocking, SE- Sandwich ELISA, CBE- Cell-based ELISA, RNAi- RNA interference

**Species reactivity key:** H- Human, M- Mouse, R- Rat, B- Bovine, C- Chicken, D- Dog, G- Goat, Mk- Monkey, P- Pig, Rb- Rabbit, S- Sheep, Z- Zebrafish

### COHESION BIOSCIENCES LIMITED

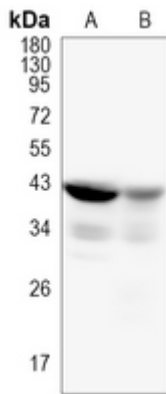
**WEB**  
[www.cohesionbio.com](http://www.cohesionbio.com)

**ORDER**  
[order@cohesionbio.com](mailto:order@cohesionbio.com)

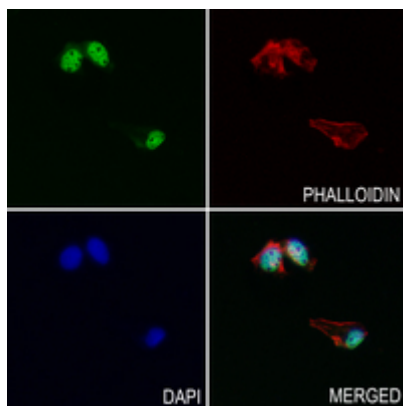
**SUPPORT**  
[techsupport@cohesionbio.com](mailto:techsupport@cohesionbio.com)

**CUSTOM**  
[custom@cohesionbio.com](mailto:custom@cohesionbio.com)

# Product Data Sheet



Western blot analysis of RBMXL2 expression in HEK293T (A), HCT116 (B) whole cell lysates. (Predicted band size: 42 kD; Observed band size: )



Immunofluorescent analysis of RBMXL2 staining in COS7 cells. Formalin-fixed cells were permeabilized with 0.1% Triton X-100 in TBS for 5-10 minutes and blocked with 3% BSA-PBS for 30 minutes at room temperature. Cells were probed with the primary antibody in 3% BSA-PBS and incubated overnight at 4 °C in a humidified chamber. Cells were washed with PBST and incubated with an AF488-conjugated secondary antibody (green) in PBS at room temperature in the dark. Phalloidin - AF594 was used to stain Actin filaments (red). DAPI was used to stain the cell nuclei (blue).

**Application key:** E- ELISA, WB- Western blot, IH- Immunohistochemistry, IF- Immunofluorescence, FC- Flow cytometry, IC- Immunocytochemistry, IP- Immunoprecipitation, CHIP- Chromatin Immunoprecipitation, EMSA- Electrophoretic Mobility Shift Assay, BL- Blocking, SE- Sandwich ELISA, CBE- Cell-based ELISA, RNAi- RNA interference

**Species reactivity key:** H- Human, M- Mouse, R- Rat, B- Bovine, C- Chicken, D- Dog, G- Goat, Mk- Monkey, P- Pig, Rb- Rabbit, S- Sheep, Z- Zebrafish

## COHESION BIOSCIENCES LIMITED

**WEB**

[www.cohesionbio.com](http://www.cohesionbio.com)

**ORDER**

[order@cohesionbio.com](mailto:order@cohesionbio.com)

**SUPPORT**

[techsupport@cohesionbio.com](mailto:techsupport@cohesionbio.com)

**CUSTOM**

[custom@cohesionbio.com](mailto:custom@cohesionbio.com)