

## Recombinant Anti-MYO1B Rabbit mAb

Catalog #	Source	Reactivity	Applications
CMA4205	Rabbit	H, M	WB
<b>Description</b>	Recombinant rabbit monoclonal antibody to MYO1B		
<b>Immunogen</b>	KLH-conjugated synthetic peptide encompassing a sequence within human MYO1B. The exact sequence is proprietary.		
<b>Purification</b>	The antibody was purified by immunogen affinity chromatography.		
<b>Specificity</b>	Recognizes endogenous levels of MYO1B protein		
<b>Clonality</b>	Monoclonal		
<b>Conjugation</b>			
<b>Form</b>	Liquid in PBS containing 50% glycerol, 0.2% BSA and 0.01% sodium azide.		
<b>Dilution</b>	WB (1/500 - 1/1000)		
<b>Gene Symbol</b>	MYO1B		
<b>Alternative Names</b>	Unconventional myosin-Ib; MYH-1c; Myosin I alpha; MMI-alpha; MMIa		
<b>Entrez Gene</b>	4430 (Human); 17912 (Mouse)		
<b>SwissProt</b>	O43795 (Human); P46735 (Mouse)		
<b>Storage/Stability</b>	Shipped at 4°C. Upon delivery aliquot and store at -20°C for one year. Avoid freeze/thaw cycles.		

**Application key:** E- ELISA, WB- Western blot, IH- Immunohistochemistry, IF- Immunofluorescence, FC- Flow cytometry, IC- Immunocytochemistry, IP- Immunoprecipitation, ChIP- Chromatin Immunoprecipitation, EMSA- Electrophoretic Mobility Shift Assay, BL- Blocking, SE- Sandwich ELISA, CBE- Cell-based ELISA, RNAi- RNA interference

**Species reactivity key:** H- Human, M- Mouse, R- Rat, B- Bovine, C- Chicken, D- Dog, G- Goat, Mk- Monkey, P- Pig, Rb- Rabbit, S- Sheep, Z- Zebrafish

### COHESION BIOSCIENCES LIMITED

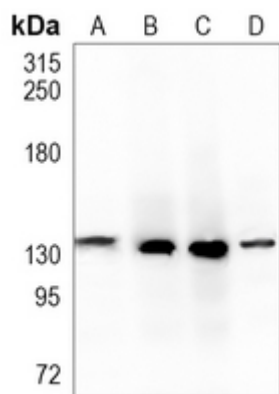
**WEB**  
[www.cohesionbio.com](http://www.cohesionbio.com)

**ORDER**  
[order@cohesionbio.com](mailto:order@cohesionbio.com)

**SUPPORT**  
[techsupport@cohesionbio.com](mailto:techsupport@cohesionbio.com)

**CUSTOM**  
[custom@cohesionbio.com](mailto:custom@cohesionbio.com)

## Product Data Sheet



Western blot analysis of MYO1B expression in HEK293T (A), H1792 (B), HCT116 (C), mouse liver (D) whole cell lysates. (Predicted band size: 131; 124 kD; Observed band size: 132 kD)

**Application key:** E- ELISA, WB- Western blot, IH- Immunohistochemistry, IF- Immunofluorescence, FC- Flow cytometry, IC- Immunocytochemistry, IP- Immunoprecipitation, CHIP- Chromatin Immunoprecipitation, EMSA- Electrophoretic Mobility Shift Assay, BL- Blocking, SE- Sandwich ELISA, CBE- Cell-based ELISA, RNAi- RNA interference

**Species reactivity key:** H- Human, M- Mouse, R- Rat, B- Bovine, C- Chicken, D- Dog, G- Goat, Mk- Monkey, P- Pig, Rb- Rabbit, S- Sheep, Z- Zebrafish

### COHESION BIOSCIENCES LIMITED

**WEB**  
[www.cohesionbio.com](http://www.cohesionbio.com)

**ORDER**  
[order@cohesionbio.com](mailto:order@cohesionbio.com)

**SUPPORT**  
[techsupport@cohesionbio.com](mailto:techsupport@cohesionbio.com)

**CUSTOM**  
[custom@cohesionbio.com](mailto:custom@cohesionbio.com)