

Recombinant Anti-MHC class I Rabbit mAb

Catalog #	Source	Reactivity	Applications
CMA4203	Rabbit	H, M, R	WB
Description	Recombinant rabbit monoclonal antibody to MHC class I		
Immunogen	KLH-conjugated synthetic peptide encompassing a sequence within human MHC class I. The exact sequence is proprietary.		
Purification	The antibody was purified by immunogen affinity chromatography.		
Specificity	Recognizes endogenous levels of MHC class I protein		
Clonality	Monoclonal		
Conjugation			
Form	Liquid in PBS containing 50% glycerol, 0.2% BSA and 0.01% sodium azide.		
Dilution	WB (1/500 - 1/1000)		
Gene Symbol	HLA-A; HLA-B; HLA-C		
Alternative Names	HLAA; HLA class I histocompatibility antigen, A-1 alpha chain; MHC class I antigen A*1; HLAB; HLA class I histocompatibility antigen, B-7 alpha chain; MHC class I antigen B*7; HLAA; HLA class I histocompatibility antigen, A-68 alpha chain; Aw-68; HLA clas		
Entrez Gene	3105, 3106, 3107 (Human)		
SwissProt	P30443, P01889, P01891, P01892, P13746, P16188, P30450 (Human)		
Storage/Stability	Shipped at 4°C. Upon delivery aliquot and store at -20°C for one year. Avoid freeze/thaw cycles.		

Application key: E- ELISA, WB- Western blot, IH- Immunohistochemistry, IF- Immunofluorescence, FC- Flow cytometry, IC- Immunocytochemistry, IP- Immunoprecipitation, ChIP- Chromatin Immunoprecipitation, EMSA- Electrophoretic Mobility Shift Assay, BL- Blocking, SE- Sandwich ELISA, CBE- Cell-based ELISA, RNAi- RNA interference

Species reactivity key: H- Human, M- Mouse, R- Rat, B- Bovine, C- Chicken, D- Dog, G- Goat, Mk- Monkey, P- Pig, Rb- Rabbit, S- Sheep, Z- Zebrafish

COHESION BIOSCIENCES LIMITED

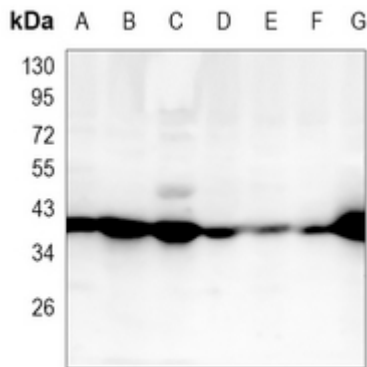
WEB
www.cohesionbio.com

ORDER
order@cohesionbio.com

SUPPORT
techsupport@cohesionbio.com

CUSTOM
custom@cohesionbio.com

Product Data Sheet



Western blot analysis of MHC class I expression in HEK293T (A), H1792 (B), HCT116 (C), mouse brain (D), mouse kidney (E), rat brain (F), rat kidney (G) whole cell lysates. (Predicted band size: 40; 41 kD; Observed band size: 41 kD)

Application key: E- ELISA, WB- Western blot, IH- Immunohistochemistry, IF- Immunofluorescence, FC- Flow cytometry, IC- Immunocytochemistry, IP- Immunoprecipitation, ChIP- Chromatin Immunoprecipitation, EMSA- Electrophoretic Mobility Shift Assay, BL- Blocking, SE- Sandwich ELISA, CBE- Cell-based ELISA, RNAi- RNA interference

Species reactivity key: H- Human, M- Mouse, R- Rat, B- Bovine, C- Chicken, D- Dog, G- Goat, Mk- Monkey, P- Pig, Rb- Rabbit, S- Sheep, Z- Zebrafish

COHESION BIOSCIENCES LIMITED

WEB

www.cohesionbio.com

ORDER

order@cohesionbio.com

SUPPORT

techsupport@cohesionbio.com

CUSTOM

custom@cohesionbio.com