

Recombinant Anti-PDI Rabbit mAb

| Catalog # | Source | Reactivity | Applications |
|--------------------------|---|------------|--------------|
| CMA4135 | Rabbit | H, M, R | WB |
| Description | Recombinant rabbit monoclonal antibody to PDI | | |
| Immunogen | KLH-conjugated synthetic peptide encompassing a sequence within human PDI. The exact sequence is proprietary. | | |
| Purification | The antibody was purified by immunogen affinity chromatography. | | |
| Specificity | Recognizes endogenous levels of PDI protein | | |
| Clonality | Monoclonal | | |
| Conjugation | | | |
| Form | Liquid in PBS containing 50% glycerol, 0.2% BSA and 0.01% sodium azide. | | |
| Dilution | WB (1/500 - 1/1000) | | |
| Gene Symbol | P4HB | | |
| Alternative Names | ERBA2L; PDI; PDIA1; PO4DB; Protein disulfide-isomerase; PDI; Cellular thyroid hormone-binding protein; Prolyl 4-hydroxylase subunit beta; p55 | | |
| Entrez Gene | 5034 (Human); 18453 (Mouse); 25506 (Rat) | | |
| SwissProt | P07237 (Human); P09103 (Mouse); P04785 (Rat) | | |
| Storage/Stability | Shipped at 4°C. Upon delivery aliquot and store at -20°C for one year. Avoid freeze/thaw cycles. | | |

Application key: E- ELISA, WB- Western blot, IH- Immunohistochemistry, IF- Immunofluorescence, FC- Flow cytometry, IC- Immunocytochemistry, IP- Immunoprecipitation, ChIP- Chromatin Immunoprecipitation, EMSA- Electrophoretic Mobility Shift Assay, BL- Blocking, SE- Sandwich ELISA, CBE- Cell-based ELISA, RNAi- RNA interference

Species reactivity key: H- Human, M- Mouse, R- Rat, B- Bovine, C- Chicken, D- Dog, G- Goat, Mk- Monkey, P- Pig, Rb- Rabbit, S- Sheep, Z- Zebrafish

COHESION BIOSCIENCES LIMITED

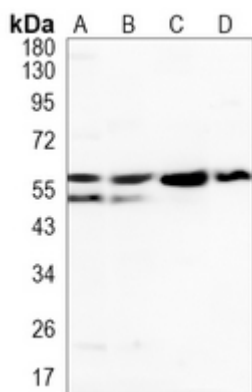
WEB
www.cohesionbio.com

ORDER
order@cohesionbio.com

SUPPORT
techsupport@cohesionbio.com

CUSTOM
custom@cohesionbio.com

Product Data Sheet



Western blot analysis of PDI expression in A549 (A), THP1 (B), mouse liver (C), rat liver (D) whole cell lysates. (Predicted band size: 57 kD; Observed band size: 57 kD)

Application key: E- ELISA, WB- Western blot, IH- Immunohistochemistry, IF- Immunofluorescence, FC- Flow cytometry, IC- Immunocytochemistry, IP- Immunoprecipitation, ChIP- Chromatin Immunoprecipitation, EMSA- Electrophoretic Mobility Shift Assay, BL- Blocking, SE- Sandwich ELISA, CBE- Cell-based ELISA, RNAi- RNA interference

Species reactivity key: H- Human, M- Mouse, R- Rat, B- Bovine, C- Chicken, D- Dog, G- Goat, Mk- Monkey, P- Pig, Rb- Rabbit, S- Sheep, Z- Zebrafish

COHESION BIOSCIENCES LIMITED

WEB

www.cohesionbio.com

ORDER

order@cohesionbio.com

SUPPORT

techsupport@cohesionbio.com

CUSTOM

custom@cohesionbio.com