

## Recombinant Anti-TRPV5 Rabbit mAb

Catalog #	Source	Reactivity	Applications
CMA4077	Rabbit	H, M	WB, IF/IC
<b>Description</b>	Recombinant rabbit monoclonal antibody to TRPV5		
<b>Immunogen</b>	KLH-conjugated synthetic peptide encompassing a sequence within human TRPV5. The exact sequence is proprietary.		
<b>Purification</b>	The antibody was purified by immunogen affinity chromatography.		
<b>Specificity</b>	Recognizes endogenous levels of TRPV5 protein		
<b>Clonality</b>	Monoclonal		
<b>Conjugation</b>			
<b>Form</b>	Liquid in PBS containing 50% glycerol, 0.2% BSA and 0.01% sodium azide.		
<b>Dilution</b>	WB (1/500 - 1/1000), IF/IC (1/50 - 1/200)		
<b>Gene Symbol</b>	TRPV5		
<b>Alternative Names</b>	ECAC1; Transient receptor potential cation channel subfamily V member 5; TrpV5; Calcium transport protein 2; CaT2; Epithelial calcium channel 1; ECaC; ECaC1; Osm-9-like TRP channel 3; OTRPC3		
<b>Entrez Gene</b>	56302 (Human); 194352 (Mouse)		
<b>SwissProt</b>	Q9NQA5 (Human); P69744 (Mouse)		
<b>Storage/Stability</b>	Shipped at 4°C. Upon delivery aliquot and store at -20°C for one year. Avoid freeze/thaw cycles.		

**Application key:** E- ELISA, WB- Western blot, IH- Immunohistochemistry, IF- Immunofluorescence, FC- Flow cytometry, IC- Immunocytochemistry, IP- Immunoprecipitation, CHIP- Chromatin Immunoprecipitation, EMSA- Electrophoretic Mobility Shift Assay, BL- Blocking, SE- Sandwich ELISA, CBE- Cell-based ELISA, RNAi- RNA interference

**Species reactivity key:** H- Human, M- Mouse, R- Rat, B- Bovine, C- Chicken, D- Dog, G- Goat, Mk- Monkey, P- Pig, Rb- Rabbit, S- Sheep, Z- Zebrafish

### COHESION BIOSCIENCES LIMITED

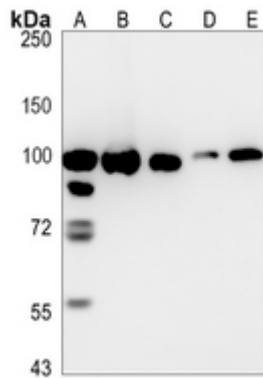
**WEB**  
[www.cohesionbio.com](http://www.cohesionbio.com)

**ORDER**  
[order@cohesionbio.com](mailto:order@cohesionbio.com)

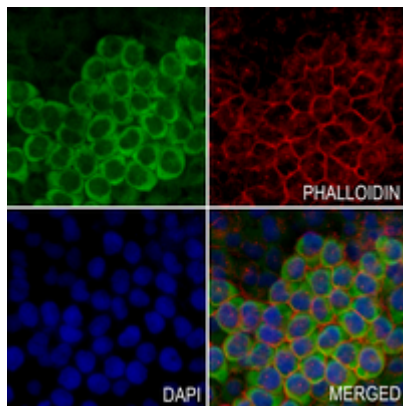
**SUPPORT**  
[techsupport@cohesionbio.com](mailto:techsupport@cohesionbio.com)

**CUSTOM**  
[custom@cohesionbio.com](mailto:custom@cohesionbio.com)

# Product Data Sheet



Western blot analysis of TRPV5 expression in HEK293T (A), EC9706 (B), LOVO (C), mouse lung (D), mouse kidney (E) whole cell lysates. (Predicted band size: 82 kD; Observed band size: 85-100 kD)



Immunofluorescent analysis of TRPV5 staining in MCF7 cells. Formalin-fixed cells were permeabilized with 0.1% Triton X-100 in TBS for 5-10 minutes and blocked with 3% BSA-PBS for 30 minutes at room temperature. Cells were probed with the primary antibody in 3% BSA-PBS and incubated overnight at 4 °C in a humidified chamber. Cells were washed with PBST and incubated with an AF488-conjugated secondary antibody (green) in PBS at room temperature in the dark. Phalloidin - AF594 was used to stain Actin filaments (red). DAPI was used to stain the cell nuclei (blue).

**Application key:** E- ELISA, WB- Western blot, IH- Immunohistochemistry, IF- Immunofluorescence, FC- Flow cytometry, IC- Immunocytochemistry, IP- Immunoprecipitation, CHIP- Chromatin Immunoprecipitation, EMSA- Electrophoretic Mobility Shift Assay, BL- Blocking, SE- Sandwich ELISA, CBE- Cell-based ELISA, RNAi- RNA interference

**Species reactivity key:** H- Human, M- Mouse, R- Rat, B- Bovine, C- Chicken, D- Dog, G- Goat, Mk- Monkey, P- Pig, Rb- Rabbit, S- Sheep, Z- Zebrafish

## COHESION BIOSCIENCES LIMITED

### WEB

[www.cohesionbio.com](http://www.cohesionbio.com)

### ORDER

[order@cohesionbio.com](mailto:order@cohesionbio.com)

### SUPPORT

[techsupport@cohesionbio.com](mailto:techsupport@cohesionbio.com)

### CUSTOM

[custom@cohesionbio.com](mailto:custom@cohesionbio.com)