

Recombinant Anti-ACVR1 Rabbit mAb

Catalog #	Source	Reactivity	Applications
CMA4050	Rabbit	H, M, R	WB
Description	Recombinant rabbit monoclonal antibody to ACVR1		
Immunogen	KLH-conjugated synthetic peptide encompassing a sequence within human ACVR1. The exact sequence is proprietary.		
Purification	The antibody was purified by immunogen affinity chromatography.		
Specificity	Recognizes endogenous levels of ACVR1 protein		
Clonality	Monoclonal		
Conjugation			
Form	Liquid in PBS containing 50% glycerol, 0.2% BSA and 0.01% sodium azide.		
Dilution	WB (1/500 - 1/1000)		
Gene Symbol	ACVR1		
Alternative Names	ACVRLK2; Activin receptor type-1; Activin receptor type I; ACTR-I; Activin receptor-like kinase 2; ALK-2; Serine/threonine-protein kinase receptor R1; SKR1; TGF-B superfamily receptor type I; TSR-I		
Entrez Gene	90 (Human); 11477 (Mouse); 79558 (Rat)		
SwissProt	Q04771 (Human); P37172 (Mouse); P80201 (Rat)		
Storage/Stability	Shipped at 4°C. Upon delivery aliquot and store at -20°C for one year. Avoid freeze/thaw cycles.		

Application key: E- ELISA, WB- Western blot, IH- Immunohistochemistry, IF- Immunofluorescence, FC- Flow cytometry, IC- Immunocytochemistry, IP- Immunoprecipitation, CHIP- Chromatin Immunoprecipitation, EMSA- Electrophoretic Mobility Shift Assay, BL- Blocking, SE- Sandwich ELISA, CBE- Cell-based ELISA, RNAi- RNA interference

Species reactivity key: H- Human, M- Mouse, R- Rat, B- Bovine, C- Chicken, D- Dog, G- Goat, Mk- Monkey, P- Pig, Rb- Rabbit, S- Sheep, Z- Zebrafish

COHESION BIOSCIENCES LIMITED

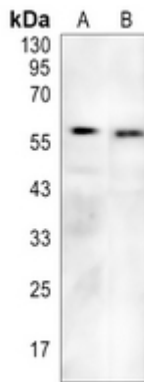
WEB
www.cohesionbio.com

ORDER
order@cohesionbio.com

SUPPORT
techsupport@cohesionbio.com

CUSTOM
custom@cohesionbio.com

Product Data Sheet



Western blot analysis of ACVR1 expression in mouse muscle (A), rat muscle (B) whole cell lysates. (Predicted band size: 57 kD; Observed band size: 57 kD)

Application key: E- ELISA, WB- Western blot, IH- Immunohistochemistry, IF- Immunofluorescence, FC- Flow cytometry, IC- Immunocytochemistry, IP- Immunoprecipitation, CHIP- Chromatin Immunoprecipitation, EMSA- Electrophoretic Mobility Shift Assay, BL- Blocking, SE- Sandwich ELISA, CBE- Cell-based ELISA, RNAi- RNA interference

Species reactivity key: H- Human, M- Mouse, R- Rat, B- Bovine, C- Chicken, D- Dog, G- Goat, Mk- Monkey, P- Pig, Rb- Rabbit, S- Sheep, Z- Zebrafish

COHESION BIOSCIENCES LIMITED

WEB

www.cohesionbio.com

ORDER

order@cohesionbio.com

SUPPORT

techsupport@cohesionbio.com

CUSTOM

custom@cohesionbio.com