

Mouse Anti-Rabbit IgG - HRP For IP/CoIP

Catalog #	Source	Reactivity	Applications
CSA9108	Mouse	Rb	IP, CoIP
Description	Mouse Monoclonal Secondary Antibody to Rabbit IgG HRP labeled		
Immunogen	Rabbit IgG		
Purification	The antibody is isolated from cell culture by protein A/G immunoaffinity chromatography.		
Specificity	The antibody is a conformation-specific secondary antibody that only reacts with native rabbit IgG and does not bind to the denatured and reduced rabbit IgG heavy chain or light chain. When performing immunoprecipitation (IP) followed by western blotting, the denatured IgG light and heavy chains of the primary antibody used for IP will not be recognised.		
Clonality	Monoclonal		
Conjugation	HRP		
Form	Liquid in PBS, pH 7.4, containing 50% glycerol, 0.05% Proclin		
Dilution	WB (1/500 - 1/2000)		
Storage/Stability	Shipped at 4° C. Upon delivery aliquot and store at -20° C for one year. Avoid freeze/thaw cycles.		

Application key: E- ELISA, WB- Western blot, IH- Immunohistochemistry, IF- Immunofluorescence, FC- Flow cytometry, IC- Immunocytochemistry, IP- Immunoprecipitation, ChIP- Chromatin Immunoprecipitation, EMSA- Electrophoretic Mobility Shift Assay, BL- Blocking, SE- Sandwich ELISA, CBE- Cell-based ELISA, RNAi- RNA interference

Species reactivity key: H- Human, M- Mouse, R- Rat, B- Bovine, C- Chicken, D- Dog, G- Goat, Mk- Monkey, P- Pig, Rb- Rabbit, S- Sheep, Z- Zebrafish

COHESION BIOSCIENCES LIMITED

WEB

www.cohesionbio.com

ORDER

order@cohesionbio.com

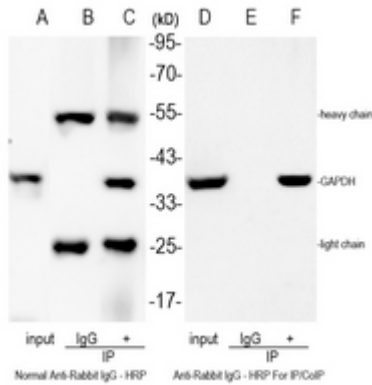
SUPPORT

techsupport@cohesionbio.com

CUSTOM

custom@cohesionbio.com

Product Data Sheet



Immunoprecipitating GAPDH in HeLa whole cell lysate with rabbit anti-GAPDH antibody. Western blot was performed on the immunoprecipitate using anti-GAPDH antibody, and followed by the normal Anti-Rabbit IgG - HRP and Anti-Rabbit IgG - HRP For IP/CoIP. Lane A and D (Input): HeLa whole cell lysate; Lane B and E (-): Rabbit IgG Isotype Control instead of GAPDH antibody in HeLa whole cell lysate; Lane C and F (+): GAPDH antibody IP in HeLa whole cell lysate.

Application key: E- ELISA, WB- Western blot, IH- Immunohistochemistry, IF- Immunofluorescence, FC- Flow cytometry, IC- Immunocytochemistry, IP- Immunoprecipitation, ChIP- Chromatin Immunoprecipitation, EMSA- Electrophoretic Mobility Shift Assay, BL- Blocking, SE- Sandwich ELISA, CBE- Cell-based ELISA, RNAi- RNA interference

Species reactivity key: H- Human, M- Mouse, R- Rat, B- Bovine, C- Chicken, D- Dog, G- Goat, Mk- Monkey, P- Pig, Rb- Rabbit, S- Sheep, Z- Zebrafish

COHESION BIOSCIENCES LIMITED

WEB

www.cohesionbio.com

ORDER

order@cohesionbio.com

SUPPORT

techsupport@cohesionbio.com

CUSTOM

custom@cohesionbio.com