

Rabbit Anti-Mouse IgG - HRP For IP/CoIP

Catalog #	Source	Reactivity	Applications
CSA9107	Rabbit	M	IP, CoIP
Description	Rabbit Monoclonal Secondary Antibody to Mouse IgG HRP labeled		
Immunogen	Mouse IgG		
Purification	The antibody is isolated from cell culture by protein A/G immunoaffinity chromatography.		
Specificity	The antibody is a conformation-specific secondary antibody that only reacts with native mouse IgG and does not bind to the denatured and reduced mouse IgG heavy chain or light chain. When performing immunoprecipitation (IP) followed by western blotting, the denatured IgG light and heavy chains of the primary antibody used for IP will not be recognised.		
Clonality	Monoclonal		
Conjugation	HRP		
Form	Liquid in PBS, pH 7.4, containing 50% glycerol, 0.05% Proclin		
Dilution	WB (1/500 - 1/2000)		
Storage/Stability	Shipped at 4°C. Upon delivery aliquot and store at -20°C for one year. Avoid freeze/thaw cycles.		

Application key: E- ELISA, WB- Western blot, IH- Immunohistochemistry, IF- Immunofluorescence, FC- Flow cytometry, IC- Immunocytochemistry, IP- Immunoprecipitation, ChIP- Chromatin Immunoprecipitation, EMSA- Electrophoretic Mobility Shift Assay, BL- Blocking, SE- Sandwich ELISA, CBE- Cell-based ELISA, RNAi- RNA interference

Species reactivity key: H- Human, M- Mouse, R- Rat, B- Bovine, C- Chicken, D- Dog, G- Goat, Mk- Monkey, P- Pig, Rb- Rabbit, S- Sheep, Z- Zebrafish

COHESION BIOSCIENCES LIMITED

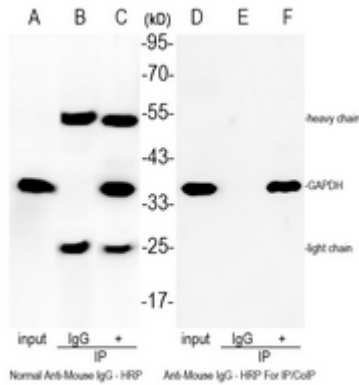
WEB
www.cohesionbio.com

ORDER
order@cohesionbio.com

SUPPORT
techsupport@cohesionbio.com

CUSTOM
custom@cohesionbio.com

Product Data Sheet



Immunoprecipitating GAPDH in HeLa whole cell lysate with mouse anti-GAPDH antibody. Western blot was performed on the immunoprecipitate using anti-GAPDH antibody, and followed by the normal Anti-Mouse IgG - HRP and Anti-Mouse IgG - HRP For IP/CoIP. Lane A and D (Input): HeLa whole cell lysate; Lane B and E (-): Mouse IgG Isotype Control instead of GAPDH antibody in HeLa whole cell lysate; Lane C and F (+): GAPDH antibody IP in HeLa whole cell lysate.

Application key: E- ELISA, WB- Western blot, IH- Immunohistochemistry, IF- Immunofluorescence, FC- Flow cytometry, IC- Immunocytochemistry, IP- Immunoprecipitation, ChIP- Chromatin Immunoprecipitation, EMSA- Electrophoretic Mobility Shift Assay, BL- Blocking, SE- Sandwich ELISA, CBE- Cell-based ELISA, RNAi- RNA interference

Species reactivity key: H- Human, M- Mouse, R- Rat, B- Bovine, C- Chicken, D- Dog, G- Goat, Mk- Monkey, P- Pig, Rb- Rabbit, S- Sheep, Z- Zebrafish

COHESION BIOSCIENCES LIMITED

WEB

www.cohesionbio.com

ORDER

order@cohesionbio.com

SUPPORT

techsupport@cohesionbio.com

CUSTOM

custom@cohesionbio.com