

Recombinant Anti-STAT1 (Phospho-Y701) Rabbit mAb

| Catalog # | Source | Reactivity | Applications |
|--------------------------|---|------------|--------------|
| CMA4729 | Rabbit | H, M, R | WB |
| Description | Recombinant rabbit monoclonal antibody to STAT1 (Phospho-Y701) | | |
| Immunogen | KLH-conjugated synthetic phosphopeptide corresponding to residues surrounding Y701 of human STAT1 protein. The exact sequence is proprietary. | | |
| Purification | The antibody was purified by immunogen affinity chromatography. | | |
| Specificity | Recognizes endogenous levels of STAT1 protein only when phosphorylated at Y701 | | |
| Clonality | Monoclonal | | |
| Conjugation | | | |
| Form | Liquid in PBS containing 50% glycerol, 0.2% BSA and 0.01% sodium azide. | | |
| Dilution | WB (1/500 - 1/1000) | | |
| Gene Symbol | STAT1 | | |
| Alternative Names | Signal transducer and activator of transcription 1-alpha/beta; Transcription factor ISGF-3 components p91/p84 | | |
| Entrez Gene | 6772 (Human) | | |
| SwissProt | P42224 (Human); P42225 (Mouse) | | |
| Storage/Stability | Shipped at 4° C. Upon delivery aliquot and store at -20° C for one year. Avoid freeze/thaw cycles. | | |

Application key: E- ELISA, WB- Western blot, IH- Immunohistochemistry, IF- Immunofluorescence, FC- Flow cytometry, IC- Immunocytochemistry, IP- Immunoprecipitation, ChIP- Chromatin Immunoprecipitation, EMSA- Electrophoretic Mobility Shift Assay, BL- Blocking, SE- Sandwich ELISA, CBE- Cell-based ELISA, RNAi- RNA interference

Species reactivity key: H- Human, M- Mouse, R- Rat, B- Bovine, C- Chicken, D- Dog, G- Goat, Mk- Monkey, P- Pig, Rb- Rabbit, S- Sheep, Z- Zebrafish

COHESION BIOSCIENCES LIMITED

WEB

www.cohesionbio.com

ORDER

order@cohesionbio.com

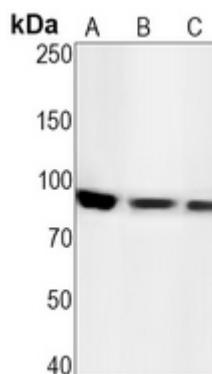
SUPPORT

techsupport@cohesionbio.com

CUSTOM

custom@cohesionbio.com

Product Data Sheet



Western blot analysis of STAT1 (Phospho-Y701) expression in PC3 (A), mouse muscle (B), rat muscle (C) whole cell lysates. (Predicted band size: 87 kD; Observed band size: 91 kD)

Application key: E- ELISA, WB- Western blot, IH- Immunohistochemistry, IF- Immunofluorescence, FC- Flow cytometry, IC- Immunocytochemistry, IP- Immunoprecipitation, CHIP- Chromatin Immunoprecipitation, EMSA- Electrophoretic Mobility Shift Assay, BL- Blocking, SE- Sandwich ELISA, CBE- Cell-based ELISA, RNAi- RNA interference

Species reactivity key: H- Human, M- Mouse, R- Rat, B- Bovine, C- Chicken, D- Dog, G- Goat, Mk- Monkey, P- Pig, Rb- Rabbit, S- Sheep, Z- Zebrafish

COHESION BIOSCIENCES LIMITED

WEB

www.cohesionbio.com

ORDER

order@cohesionbio.com

SUPPORT

techsupport@cohesionbio.com

CUSTOM

custom@cohesionbio.com