

Recombinant Anti-EIF4A3 Rabbit mAb

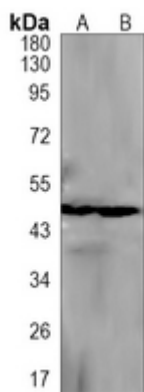
Catalog #	Source	Reactivity	Applications
CMA4609	Rabbit	H	WB
Description	Recombinant rabbit monoclonal antibody to EIF4A3		
Immunogen	KLH-conjugated synthetic peptide encompassing a sequence within human EIF4A3 protein. The exact sequence is proprietary.		
Purification	The antibody was purified by immunogen affinity chromatography.		
Specificity	Recognizes endogenous levels of EIF4A3 protein		
Clonality	Monoclonal		
Conjugation			
Form	Liquid in PBS containing 50% glycerol, 0.2% BSA and 0.01% sodium azide.		
Dilution	WB (1/500 - 1/1000)		
Gene Symbol	EIF4A3		
Alternative Names	DDX48; KIAA0111; Eukaryotic initiation factor 4A-III; eIF-4A-III; eIF4A-III; ATP-dependent RNA helicase DDX48; ATP-dependent RNA helicase eIF4A-3; DEAD box protein 48; Eukaryotic initiation factor 4A-like NUK-34; Eukaryotic translation initiation factor 4		
Entrez Gene	9775 (Human)		
SwissProt	P38919 (Human)		
Storage/Stability	Shipped at 4° C. Upon delivery aliquot and store at -20° C for one year. Avoid freeze/thaw cycles.		

Application key: E- ELISA, WB- Western blot, IH- Immunohistochemistry, IF- Immunofluorescence, FC- Flow cytometry, IC- Immunocytochemistry, IP- Immunoprecipitation, ChIP- Chromatin Immunoprecipitation, EMSA- Electrophoretic Mobility Shift Assay, BL- Blocking, SE- Sandwich ELISA, CBE- Cell-based ELISA, RNAi- RNA interference

Species reactivity key: H- Human, M- Mouse, R- Rat, B- Bovine, C- Chicken, D- Dog, G- Goat, Mk- Monkey, P- Pig, Rb- Rabbit, S- Sheep, Z- Zebrafish

COHESION BIOSCIENCES LIMITED**WEB**www.cohesionbio.com**ORDER**order@cohesionbio.com**SUPPORT**techsupport@cohesionbio.com**CUSTOM**custom@cohesionbio.com

Product Data Sheet



Western blot analysis of EIF4A3 expression in HeLa (A), MCF7 (B) whole cell lysates. (Predicted band size: 46 kD; Observed band size: 47 kD)

Application key: E- ELISA, WB- Western blot, IH- Immunohistochemistry, IF- Immunofluorescence, FC- Flow cytometry, IC- Immunocytochemistry, IP- Immunoprecipitation, CHIP- Chromatin Immunoprecipitation, EMSA- Electrophoretic Mobility Shift Assay, BL- Blocking, SE- Sandwich ELISA, CBE- Cell-based ELISA, RNAi- RNA interference

Species reactivity key: H- Human, M- Mouse, R- Rat, B- Bovine, C- Chicken, D- Dog, G- Goat, Mk- Monkey, P- Pig, Rb- Rabbit, S- Sheep, Z- Zebrafish

COHESION BIOSCIENCES LIMITED

WEB

www.cohesionbio.com

ORDER

order@cohesionbio.com

SUPPORT

techsupport@cohesionbio.com

CUSTOM

custom@cohesionbio.com