

Recombinant Anti-BCL2 Rabbit mAb

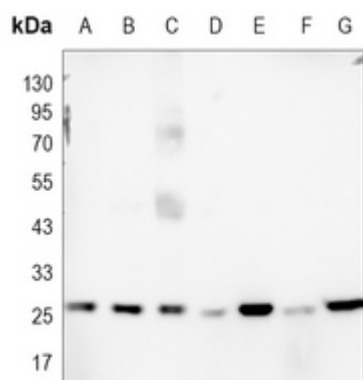
Catalog #	Source	Reactivity	Applications
CMA1199	Rabbit	H, M, R	WB, IH, IF/IC
Description	Recombinant rabbit monoclonal antibody to BCL2		
Immunogen	KLH-conjugated synthetic peptide encompassing a sequence within the center region of human BCL2. The exact sequence is proprietary.		
Purification	This antibody is purified through a protein G column.		
Specificity	Recognizes endogenous levels of BCL2 protein.		
Clonality	Monoclonal		
Conjugation			
Form	Liquid in PBS, pH 7.3, 50% glycerol, and 0.05% Proclin300.		
Dilution	WB (1/1000 - 1/3000), IH (1/100 - 1/300), IF/IC (1/100 - 1/300)		
Gene Symbol	BCL2		
Alternative Names	Apoptosis regulator Bcl-2		
Entrez Gene	596 (Human); 12043 (Mouse); 24224 (Rat)		
SwissProt	P10415 (Human); P10417 (Mouse); P49950 (Rat)		
Storage/Stability	Shipped at 4°C. Upon delivery aliquot and store at -20°C for one year. Avoid freeze/thaw cycles.		

Application key: E- ELISA, WB- Western blot, IH- Immunohistochemistry, IF- Immunofluorescence, FC- Flow cytometry, IC- Immunocytochemistry, IP- Immunoprecipitation, ChIP- Chromatin Immunoprecipitation, EMSA- Electrophoretic Mobility Shift Assay, BL- Blocking, SE- Sandwich ELISA, CBE- Cell-based ELISA, RNAi- RNA interference

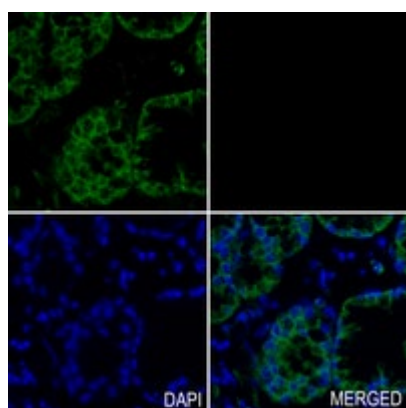
Species reactivity key: H- Human, M- Mouse, R- Rat, B- Bovine, C- Chicken, D- Dog, G- Goat, Mk- Monkey, P- Pig, Rb- Rabbit, S- Sheep, Z- Zebrafish

COHESION BIOSCIENCES LIMITED**WEB**www.cohesionbio.com**ORDER**order@cohesionbio.com**SUPPORT**techsupport@cohesionbio.com**CUSTOM**custom@cohesionbio.com

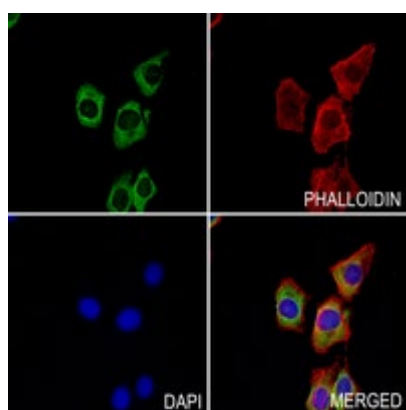
Product Data Sheet



Western blot analysis of BCL2 expression in H1792 (A), A2780 (B), HUT78 (C), mouse spleen (D), mouse kidney (E), rat spleen (F), rat kidney (G) whole cell lysates. (Predicted band size: 26 kD; Observed band size: 26 kD)



Immunohistochemical analysis of BCL2 staining in human stomach cancer formalin fixed paraffin embedded tissue section. The section was pre-treated using heat mediated antigen retrieval with sodium citrate buffer (pH 6.0). The section was then incubated with the antibody at room temperature and detected using an HRP conjugated compact polymer system. Tyramide-AF488 (green) was used as the chromogen. The section was then counterstained with DAPI (blue).



Immunofluorescent analysis of BCL2 staining in HepG2 cells. Formalin-fixed cells were permeabilized with 0.1% Triton X-100 in TBS for 5-10 minutes and blocked with 3% BSA-PBS for 30 minutes at room temperature. Cells were probed with the primary antibody in 3% BSA-PBS and incubated overnight at 4 °C in a humidified chamber. Cells were washed with PBST and incubated with an AF488-conjugated secondary antibody (green) in PBS at room temperature in the dark. Phalloidin - AF594 was used to stain Actin filaments (red). DAPI was used to stain the cell nuclei (blue).

Application key: E- ELISA, WB- Western blot, IH- Immunohistochemistry, IF- Immunofluorescence, FC- Flow cytometry, IC- Immunocytochemistry, IP- Immunoprecipitation, ChIP- Chromatin Immunoprecipitation, EMSA- Electrophoretic Mobility Shift Assay, BL- Blocking, SE- Sandwich ELISA, CBE- Cell-based ELISA, RNAi- RNA interference

Species reactivity key: H- Human, M- Mouse, R- Rat, B- Bovine, C- Chicken, D- Dog, G- Goat, Mk- Monkey, P- Pig, Rb- Rabbit, S- Sheep, Z- Zebrafish

COHESION BIOSCIENCES LIMITED

WEB

www.cohesionbio.com

ORDER

order@cohesionbio.com

SUPPORT

techsupport@cohesionbio.com

CUSTOM

custom@cohesionbio.com